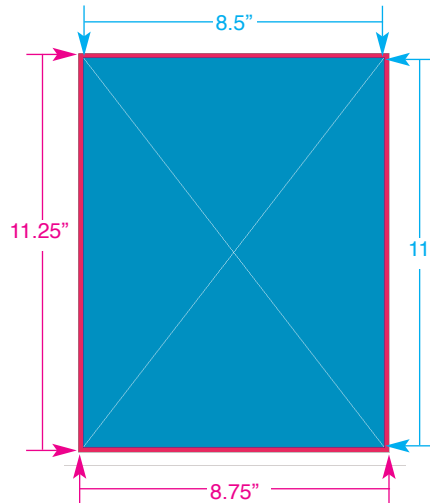


PDF Creation Specs

When producing a document that requires bleed (image extends to outer edges of document) you need to make your document size an 1/8" (.125) beyond the final document size.

Example:

8.5 x 11 finish size would need to be 8.75 x 11.25 (see picture 1).
The pink edges around the blue represents the 1/8" bleed.



Picture 1:

When creating a pdf in Indesign or Quark for digital printing you need to flatten the images before producing the pdf. This will ensure all transparent layers and such will print correctly and not leave white boxes or darker boxes where a layered image is. (Indesign is previewed below in pictures 2-4)

Picture 2:

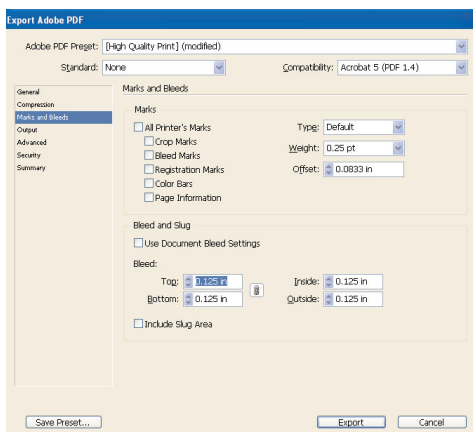
When opening the export to pdf dialog box you will to set bleeds if needed to 1/8" (.125) by hitting marks and bleeds button on upper left side.

Picture 3:

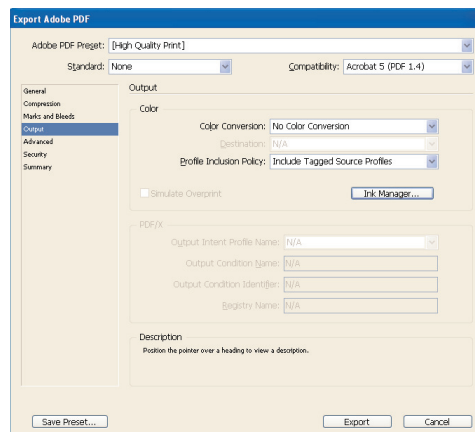
Click on output button and you will see the Ink Manager button in the center.

Picture 4:

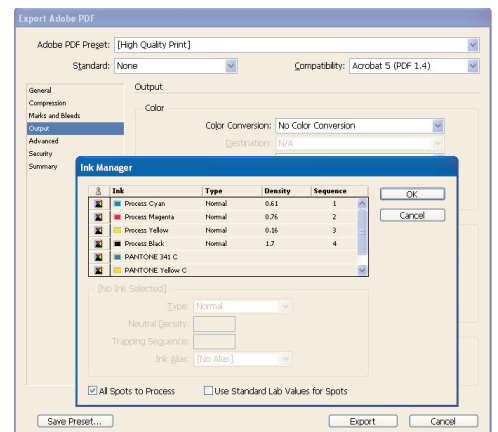
Click on the Ink Manager button and all the inks being used in the document are listed. Click on the All Spots To Process button on the lower left. Click OK and then hit the Export button.



Picture 2:



Picture 3:



Picture 4: